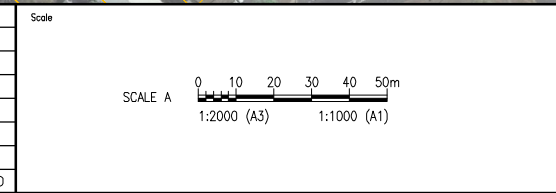


**NOTE:**  
1. FOR LEGEND REFER DRG. NO. CRR-GEN-R-1000.

**NOT FOR CONSTRUCTION**

This drawing is confidential and shall only be used for the purposes of this project.

NO.	BY	DATE	DESCRIPTION	APPD
C		13.05.11	UPDATED REFERENCE DESIGN	



**DISCLAIMER:**  
THIS DOCUMENT IS FOR THE PURPOSE OF BUSINESS CASE AND EIS DEVELOPMENT ONLY. THE DESIGN SHOWN ON THIS DRAWING IS CONSIDERED TO HAVE AN ACCURACY LEVEL APPROPRIATE FOR THE INTENDED PURPOSE OF THE REFERENCE DESIGN. THIS DOCUMENT USES DATA PROVIDED BY THIRD PARTIES WHICH HAS NOT BEEN INDEPENDENTLY VERIFIED. INFORMATION SHOULD BE REVIEWED SUBSEQUENT PHASES OF THE PROJECT. ALL USE OF, OR RELIANCE UPON THIS DOCUMENT BY ANY THIRD PARTY IS AT THE RISK OF THAT THIRD PARTY.

Drawn: \_\_\_\_\_ Checked: \_\_\_\_\_

Cad ref: J:\MegaProjects\60145303\5. CAD0\5.3 Working\5.3.6 Reference Design\DWG\Drawings\CRR-GEN-R-1153.dwg  
Last modified: 11 May 11 - 15:59

LEAD DESIGN CONSULTANT  
**AECOM**  
AECOM Australia Pty Ltd A.B.N. 20 093 846 925  
SUB-CONSULTANT



CROSS RIVER RAIL – DETAILED FEASIBILITY PHASE  
ZONE 1000  
GENERAL ARRANGEMENT – SURFACE TRACK  
SHEET 4 OF 24

Status: REFERENCE DESIGN  
Drg No: CRR-GEN-R-1153  
Rev: C